

# PRODUCT SPECIFICATION



Patent  
Certification



High-tech Enterprise  
Certification



ISO Certification

MODEL: CBD-20



Electric pallet truck  
NO LOAD TOO  
DIFFICULT TO WEIGH



# Electric Pallet Truck with Digital Scale

## Fork Features



Intelligent Handle



Magnetic Switch



Optional electronic scale



Equipped with emergency stop switch



Lithium/Lead Acid  
Optional



Stable and Balanced



Sturdy Iron Surround



210mm large drive  
wheel



Can be equipped with  
auxiliary wheels





## ■ material introduction

Iron casing reduces damage caused during use or transportation.



Iron covered box with battery inside,  
waterproof and dustproof performance.



- ✓ Waterproof
- ✓ Collision avoidance



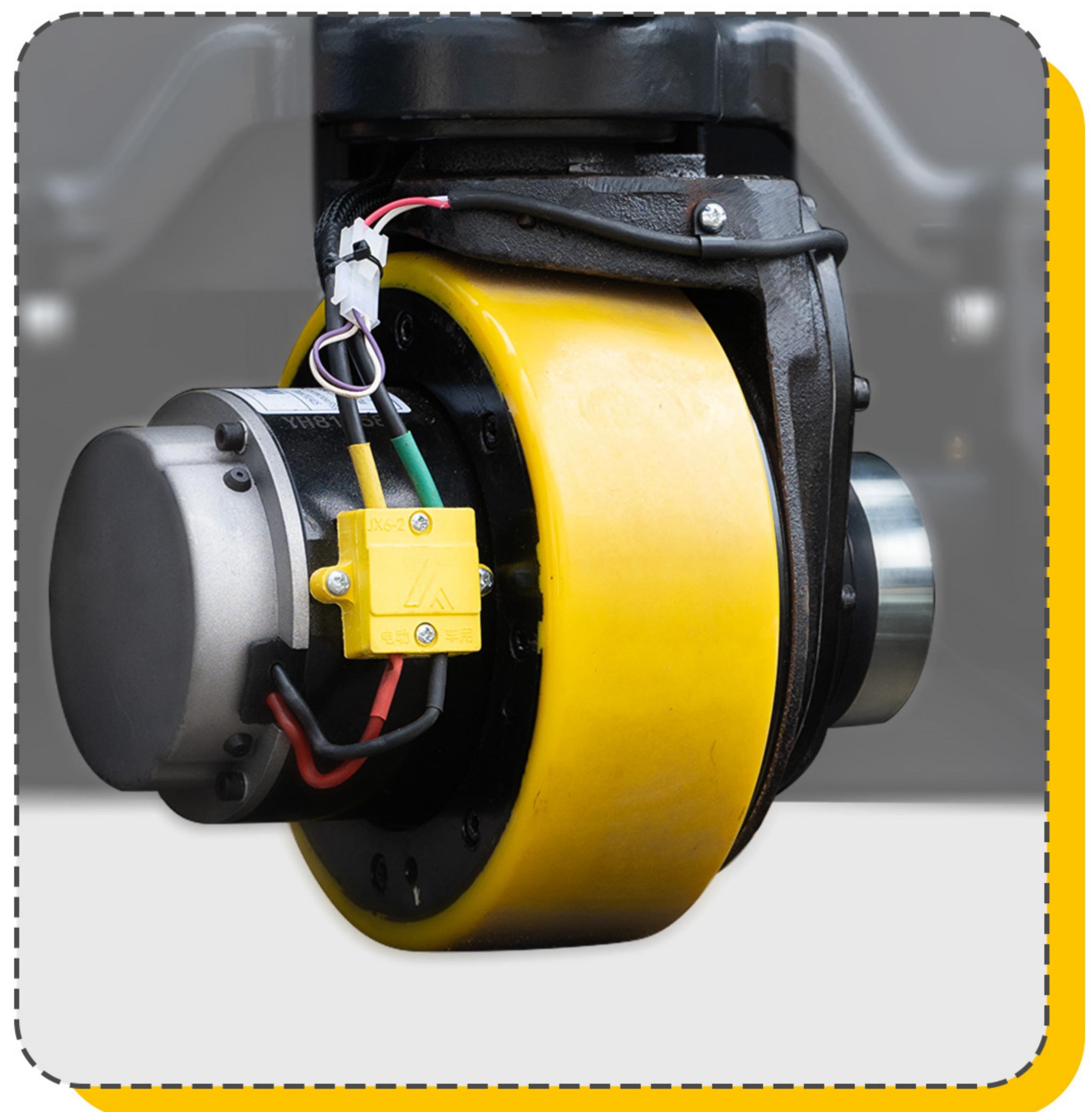
## ■ WHEEL INTRODUCTION

Elastic auxiliary wheels for better passability.



210mm large diameter drive wheel

- ✓ Electromagnetic brake
- ✓ Obstacle-Crossing Capability
- ✓ Gradeability
- ✓ Power 1000W





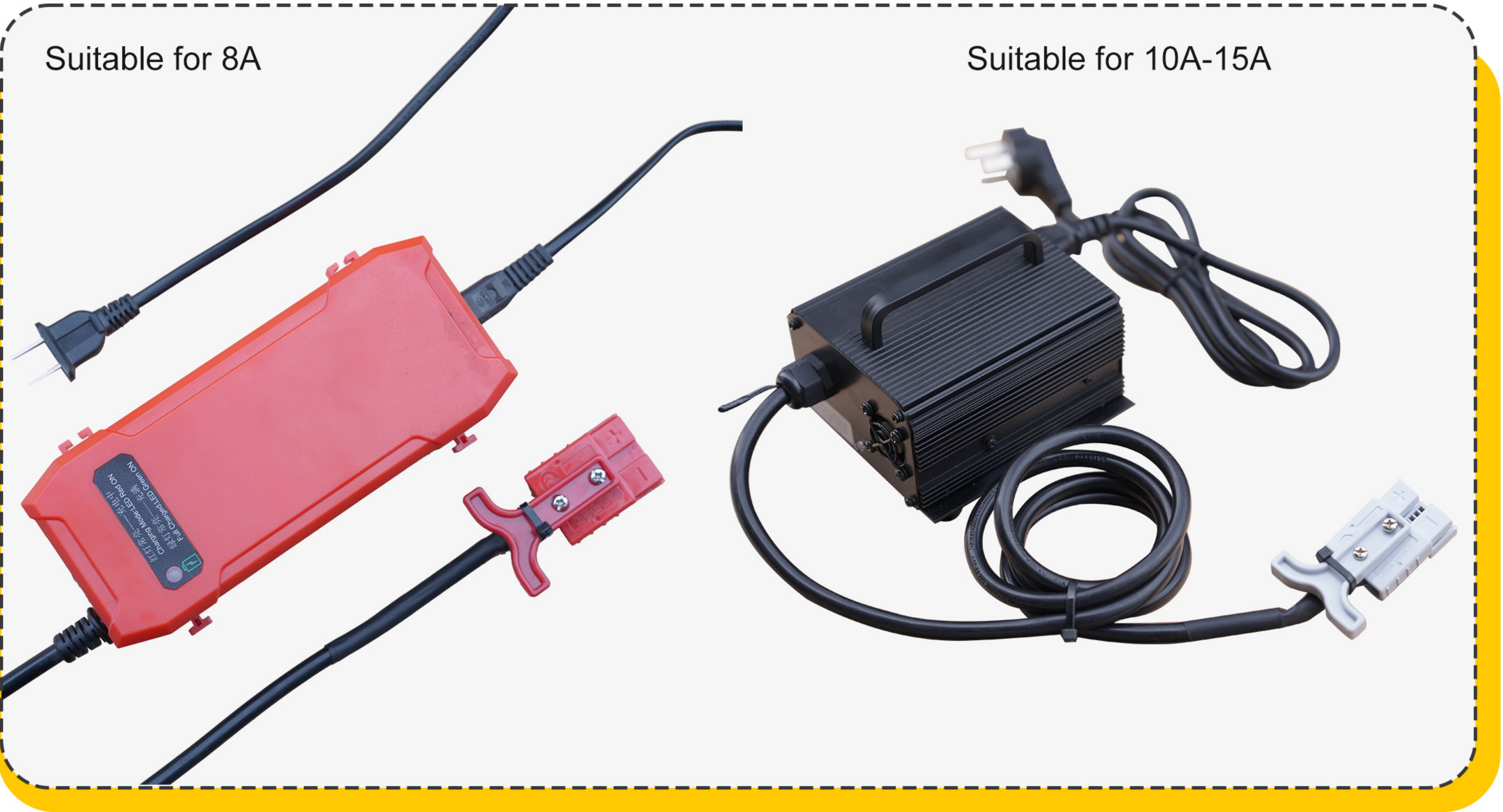
# ■ ERGONOMOMIC OPERATING HANDLE

Rubber coated handle,Silence ,shock absorption,not hurting the floor.





CHARGER



Emergency stop switch and charging port



Two options: lead-acid and lithium batteries



# ■ FORKS WITH DISTANCE MARKINGS

You can quickly determine whether the fork has exceeded the pallet by the scale on the fork.

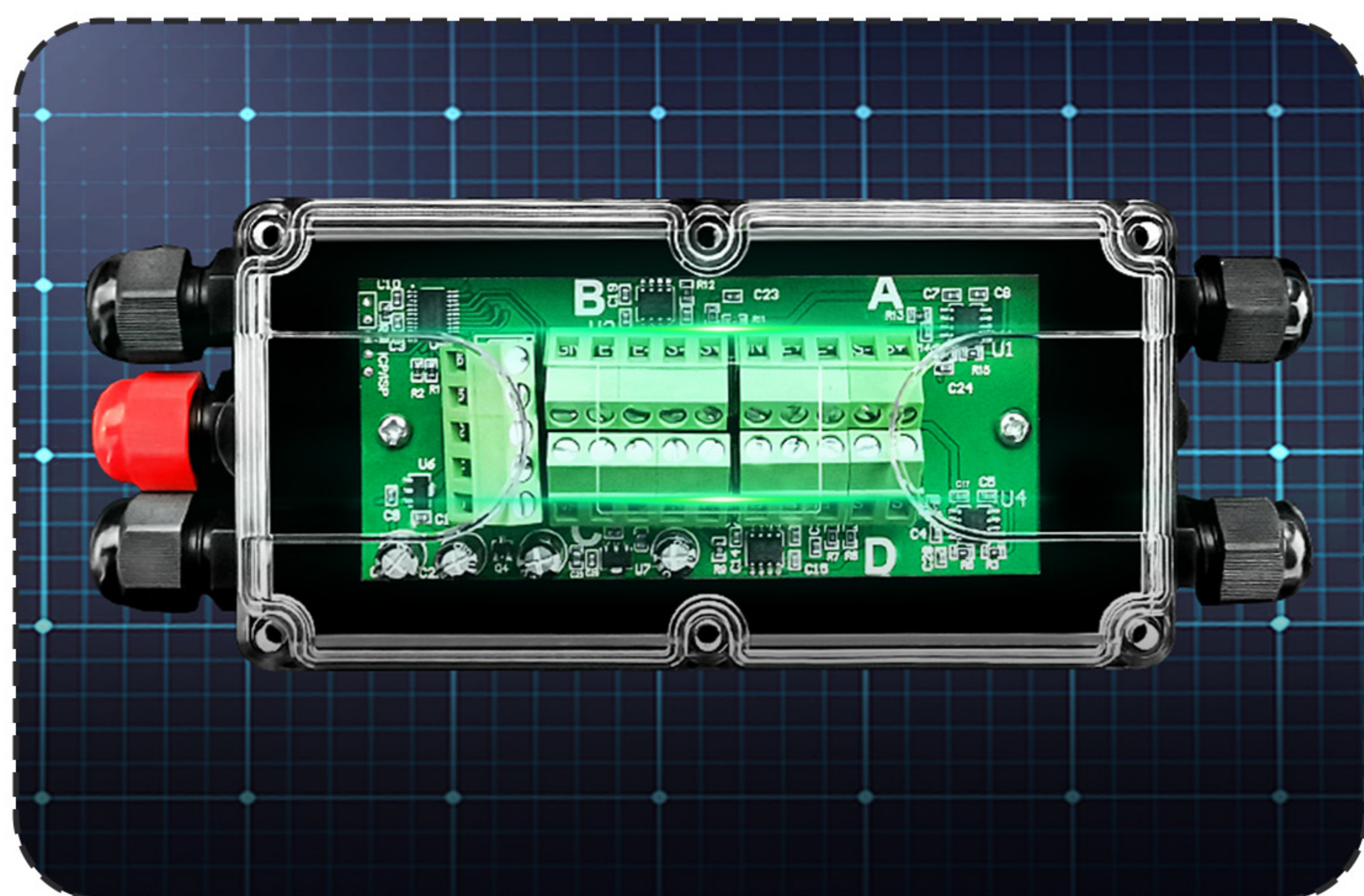






## ***MODEL: CBD-C20***

### ***ELECTRIC PALLET TRUCK WITH DIGITAL SCALE***



## **Control Board**

The 4-core digital smart system provides more accurate calibration than manual adjustment. Replacing the display unit requires no additional settings and does not affect accuracy.



## ■ CONTROL BOARD



1. Adopt advanced sensor technology to realize the changes in the weight of the cargo, with accurate weighing and automatic calibration function.



2. The control board is equipped with a variety of general interfaces, such as RS232, RS485, USB, etc., so as to connect to different types of heads. These interfaces are widely compatible and can be seamlessly connected to most electronic scale.

## ■ SENSOR INTRODUCTION



- Built-in four high-precision sensors
- Digital intelligent calibration of high-precision sensors for more accurate weighing
- Accuracy options available: 0.2KG / 0.5KG
- Precise weighing achievable at any point on the fork



# ALUMINUM ALLOY DISPLAY(OPTIONAL)



- ◆ Anti -collision
- ◆ waterproof
- ◆ dustproof

## Key Function

Function	Includes functions such as label printing, selection, dynamic weighing, and filtered weighing.
Count	Builds on basic weighing by adding recognition and memory of unit weight.The counting mode is suitable for items with relatively fixed specifications: the scale pan automatically detects and counts the quantity, displaying the result on the panel.
Tare	Pressing the button records the container’s weight and subtracts it from the total, so the display reads zero.
Unit	Switch between lb and kg units.
Zero	Reset the scale to zero.
Print	Data printing.



Instrument charger



1 charger and 2 batteries (optional)



Fast replacement



■ PARAMETER INTRODUCTION

Characteristic					
Model		CBD-20		CBD-C20	
Motive power		Electric			
Operation type		Walking style			
Rated load	Q(t)	2.0t			
Load center	mm	500			
Front suspension distance	mm	943		981	
Wheelbase	mm	1284		1324	
Weight					
Weight (excluding battery)	mm	155		166	
Bridge load at full load, drive side/ Load bearing side	kg	483/1132	486/1134	492/1638	494/1641
Bridge load when unloaded, drive side/Load bearing side	kg	100/30	102/33	100/30	102/33
Wheels / chassis					
Wheel material		Polyurethane Wheel			
Wheel size, drive side	φ(mm)	Diameter 210*75			
Wheel size, load-bearing side	φ(mm)	φ80*70			
Stable wheel (size)	mm	φ80*30			
Track width, drive side	mm	429			
Track width, load-bearing side	mm	380	520	380	520
Basic dimensions					
Upper height	mm	190			
Handle Height Max/Mini	mm	1220			
Minimum height of fork	mm	82±3			
overall length	mm	1676			
Vehicle length	mm	524			
Fork outer width	mm	545		685	
Fork size	mm	55*160*1150			
Turning radius	mm	1487			
Performance					
Upper height	Km/h	Full Load / No Load		3.5	
Max Climb capability	%	Full Load / No Load		7/16	
service brake		Electromagnetic Brake			
Electrical machinery					
battery voltage	V/Ah	24~48V/32~60~75~80Ah			
Battery weight	kg	Lithium Battery: 3/3.4/5.9/8.16/9.11 Lead-Acid Battery: 12/18/24/31/38/52			
battery voltage	kw	24V0.75W/48V0.9KW			